



We goofed.

We hate making mistakes, particularly when they lead to *you* making a mistake.

We scrupulously edit all our patterns, but when an inaccuracy does slip through we post a correction as quickly as possible.

Corrections for this book have been compiled in this PDF. If we're aware of an error, we fix it before reprinting a book, so your edition may already include these changes.

The corrections listed here should allow you to complete your project with ease. If not, give us a call at 800-426-3126 and we'll do our best to help. And again, many apologies for the error.

Note that if you prefer double-pointed needles to circulars (as I do!) and own more than one set in the size needed, this is a great opportunity to work with 6 double-pointed needles—one for each pattern repeat and one as the working needle.

Gauge

8-st gauge (Child's, Adult's):
16 sts and 18 rnds = 2" over two-color St st worked in the rnd with larger needles

10-st gauge (Adult's):
20 sts and 22 rnds = 2" over two-color St st worked in the rnd with larger needles

Instructions

With smaller dpns, CO 120 (140, 160, 180, 200, 230) sts. Join, being careful not to twist sts. Beg K1, P1 ribbing, pm at end of first rnd. Cont K1, P1 ribbing for 1¼ (1½, 1¾, 2, 1¾, 2)". Purl 1 rnd.

Wrap next st, turn work, and push completed knitting through your needles. You'll be knitting in other direction now. Resume K1, P1 ribbing for an additional 1¼ (1½, 1¾, 2, 1¾, 2)".

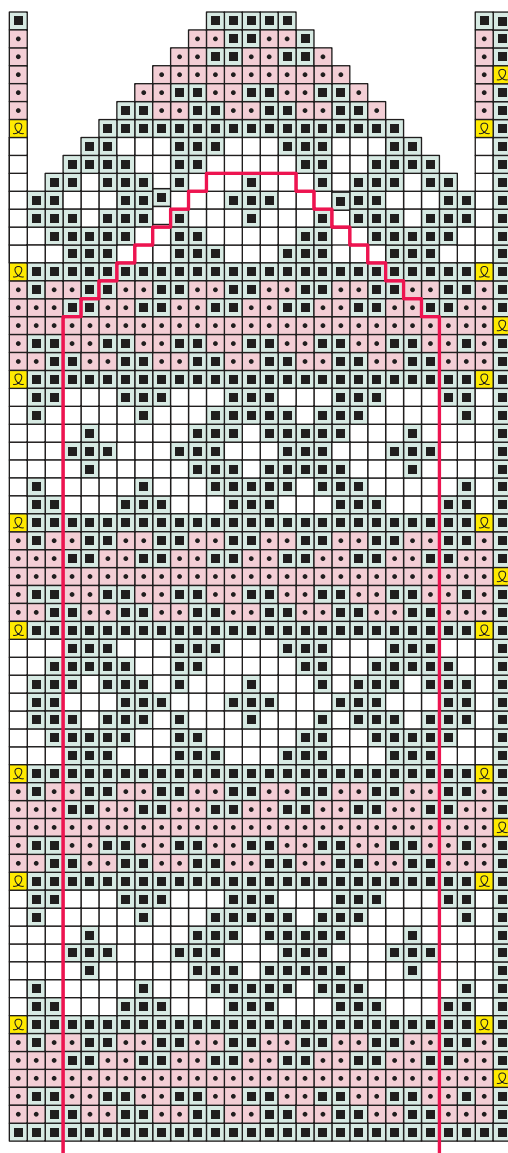
Switch to larger dpns. Attach CC yarn(s) and knit from chart for appropriate size and gauge and chart appropriate for number of cast-on sts, beg at bottom right-hand corner. There will be 5 reps of patt around hat. Be sure to work "seam" sts and inside red lines if you need to. Cont until entire chart for matching size is complete, changing from circular needle to dpns when working on circular needle becomes awkward. There will be 40 sts when you have worked the final rnd from chart.

Crown (dec rnds): Work top of crown chart below, which shows how to work final 4 rnds of dec. Note that the decs are worked

from the center of the cap, not the seam sts. If using a different hand chart, color the chart to match patt for your cap.

Using a Mitten Chart to Design a Cap

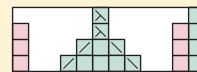
If you do a little arithmetic based on the size of the mitten charts and head sizes, a wonderful thing becomes apparent. If you use five repeats of the flat mitten chart, you get a cap that fits the size the mitten will fit.



- Green (MC)
- Yellow (CC1)
- Pink (CC2)
- sl st

For Mitten 6 chart,
CO 120 sts for Child's Medium
CO 140 sts for Child's Large

Top of Crown Chart



- ssk
- K2tpg
- sl 1-K1-ssso
- Green
- Pink