



## **We goofed.**

We hate making mistakes, particularly when they lead to you making a mistake. We scrupulously edit all our patterns, but when an inaccuracy does slip through we post a correction as quickly as possible.

Corrections for this book have been compiled in this PDF. Any pages with errors have been completely redesigned; you can print and then insert the corrected pages in your copy of the book. If we're aware of an error, we fix it before reprinting a book, so your edition may already include these changes. Scroll to page 2 of this document to view the corrections.

The corrections listed here should allow you to complete your project with ease. If not, give us a call at 800-426-3126 and we'll do our best to help. And again, many apologies for the error.

## BODY OF SHAWL

Work chart A 5 times. Work rows 1–19 of chart A once more—305 sts.

**Next row (WS):** K3, YO, K1, K2tog twice, knit to the last 8 sts, K2tog twice, K1, YO, K3—303 sts.

### STITCH COUNT FOR BODY OF SHAWL

Rep 1 of chart A	67 sts
Rep 2 of chart A	115 sts
Rep 3 of chart A	163 sts
Rep 4 of chart A	211 sts
Rep 5 of chart A	259 sts
Rows 1–19 of chart A	305 sts
Final WS row	303 sts

## LACE EDGING

With RS facing, CO 25 sts using the knitted CO.

### First Border

**Row 1 (RS):** K24, ssk last border st with first body st on left needle.

**Row 2 (WS):** Sl 1 wyib, K24.  
Rep rows 1 and 2 once more.

### Edge Chart

Work chart B 23 times.

### Final Border

**Row 1 (RS):** K24, ssk last border st with first body st on left needle.

**Row 2 (WS):** Sl 1 wyib, K24.  
Rep row 1 once more.

## FINISHING

BO loosely kw (page 92) on WS. Block shawl to finished measurements given at beg of patt. With tapestry needle, weave in ends.

## WRITTEN INSTRUCTIONS FOR CHARTS

If you prefer to follow row-by-row written instructions rather than a chart, use the instructions below.

### Chart A

**Row 1 (RS):** K2, YO, K2, \*YO, ssk, K7, K2tog, YO, K1; rep from \* to last 3 sts, K1, YO, K2.

**Row 2 and all even-numbered rows (WS):** K3, YO, K1, purl to the last 4 sts, K1, YO, K3.

**Row 3:** K2, YO, K4, \*K1, YO, ssk, K5, K2tog, YO, K2; rep from \* to last 5 sts, K3, YO, K2.

**Row 5:** (K2, YO) twice, ssk, K2, \*K2, YO, ssk, K3, K2tog, YO, K3; rep from \* to last 7 sts, K1, K2tog, (YO, K2) twice.

**Row 7:** K2, YO, K5, \*YO, ssk, K1, K2tog, YO, K1; rep from \* to last 6 sts, K4, YO, K2.

**Row 9:** K2, YO, K3, YO, ssk, K3, YO, sk2p, \*YO, K3, YO, sk2p; rep from \* to last 10 sts, YO, K3, K2tog, YO, K3, YO, K2.

**Row 11:** K2, YO, \*K3, K2tog, YO, K1, YO, ssk, K4; rep from \* to last 13 sts, K3, K2tog, YO, K1, YO, ssk, K3, YO, K2.

**Row 13:** (K2, YO) twice, \*K2, K2tog, YO, K3, YO, ssk, K3; rep from \* to last 15 sts, K2, K2tog, YO, K3, YO, ssk, (K2, YO) twice, K2.

**Row 15:** (K2, YO) twice, K3, \*K1, K2tog, YO, K5, YO, ssk, K2; rep from \* to last 6 sts, (K2, YO) twice, K2.

**Row 17:** (K2, YO) twice, \*K2tog, YO, K1, YO, ssk, K1; rep from \* to last 9 sts, K2tog, YO, K1, YO, ssk, (YO, K2) twice.

**Row 19:** K2, YO, K4, YO, K2tog, \*YO, K3, YO, sk2p; rep from \* to last 11 sts, YO, K3, YO, ssk, YO, K4, YO, K2.

**Row 20:** K3, YO, K1, purl to the last 4 sts, K1, YO, K3.

**Rep rows 1–20 for patt.**

### Chart B

**Row 1 (RS):** K3, P1, K4, K2tog, K2, YO, K1, YO, K2, ssk, K4, P1, K2, ssk last border st with next body st on left needle.

**Row 2 (WS):** Sl 1 wyib, K3, P3, P2tog tbl, P2, YO, P3, YO, P2, P2tog, P3, K4.

**Row 3:** K3, P1, K2, K2tog, K2, YO, K5, YO, K2, ssk, K2, P1, K2, ssk last border st with next body st on left needle.

**Row 4:** Sl 1 wyib, K3, P1, P2tog tbl, P2, YO, P7, YO, P2, P2tog, P1, K4.

Row 5: Rep row 1.

Rows 7, 9 and 11: K3, \*P3, K3, P5, K3, P3; rep from \* to last 3 sts, K3.

Row 12: K3, purl to last 3 sts, K3.

Rep rows 1-12 for patt.

### Chart B

Row 1 (RS): K3, \*ssk 3 times, (YO, K1) 5 times, YO, K2tog 3 times; rep from \* to last 3 sts, K3.

Rows 2, 4, 6, 8, 10, 12, 14, and 16 (WS): K3, purl to last 3 sts, K3.

Row 3: Knit all sts.

Row 5: Rep row 1.

Rows 7, 9 and 11: K3, \*P3, K3, P5, K3, P3; rep from \* to last 3 sts, K3.

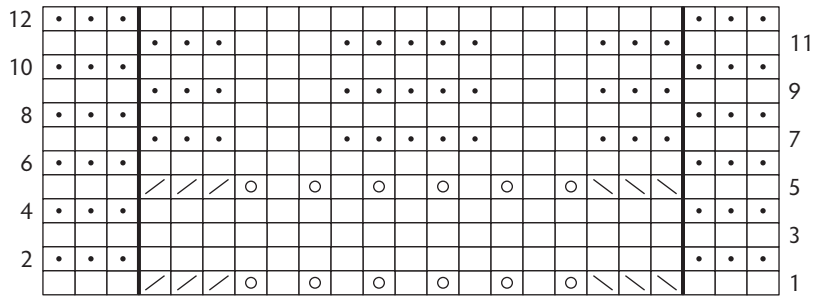
Row 13: K3, \*ssk 3 times, (K1, YO) 4 times, K1, K2tog 3 times; rep from \* to last 3 sts, K3.

Row 15: Knit all sts.

Row 17: K3, \*ssk 3 times, (YO, K1) 3 times, YO, K2tog 3 times; rep from \* to last 3 sts, K3.

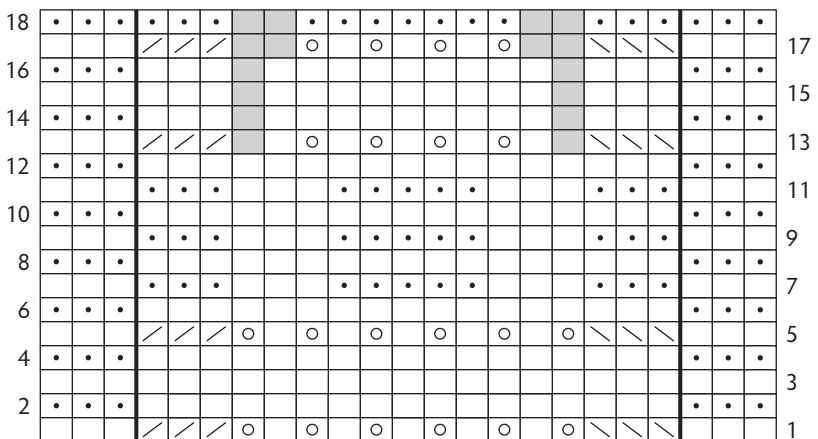
Row 18: Knit all sts.

### Violetear Chart A



Repeat = 17 sts

### Violetear Chart B



Repeat = 17 sts

Row 17 has been updated.

### Chart Legend

- K on RS, P on WS
- P on RS, K on WS
- YO
- K2tog
- SSK
- No stitch