



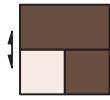
We goofed.

We hate making mistakes, particularly when they lead to you making a mistake. We scrupulously edit all our patterns, but when an inaccuracy does slip through we post a correction as quickly as possible.

Corrections for this book have been compiled in this PDF. Any pages with errors have been completely redesigned; you can print and then insert the corrected pages in your copy of the book. If we're aware of an error, we fix it before reprinting a book, so your edition may already include these changes. Scroll to page 2 of this document to view the corrections.

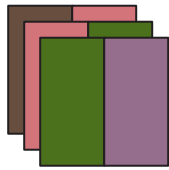
The corrections listed here should allow you to complete your project with ease. If not, give us a call at 800-426-3126 and we'll do our best to help. And again, many apologies for the error.

2. Sew a matching medium to dark batik $2\frac{1}{2}$ " x $4\frac{1}{2}$ " rectangle to the top of each unit from step 1. Press.



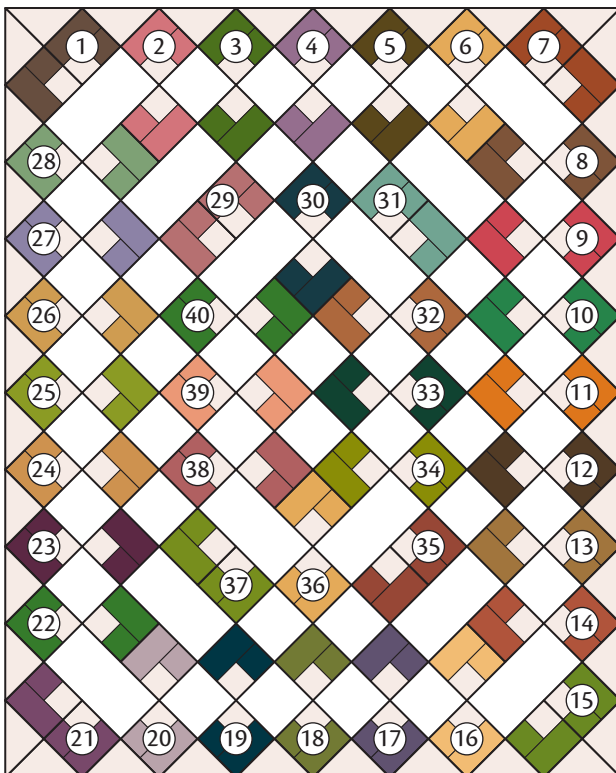
Make 2 from each fabric.

3. Sew together the remaining medium to dark batik $2\frac{1}{2}$ " x $4\frac{1}{2}$ " rectangles in pairs as follows: fabric 1 to fabric 2; fabric 2 to fabric 3; fabric 3 to fabric 4. Continue pairing up the rectangles in this manner through fabric 27. Sew fabric 28 to fabric 1. Beginning with fabric 29, sew fabric 29 to 30; fabric 30 to 31; fabric 31 to 32. Continue pairing up the rectangles in this manner through fabric 39. Sew fabric 40 to fabric 29. Press. Stack the rectangle units in the order sewn for ease in laying out your blocks.

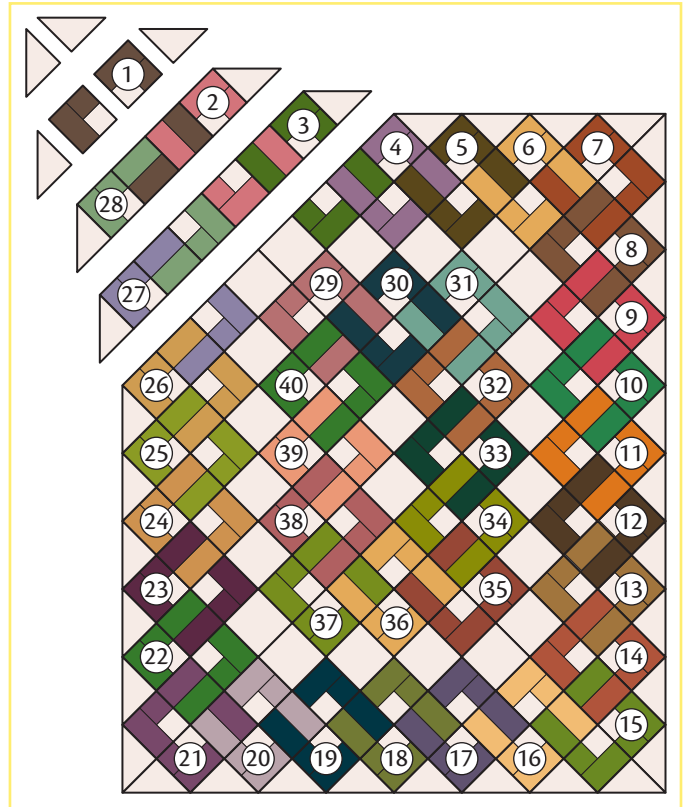


QUILT ASSEMBLY AND FINISHING

1. Arrange the blocks from step 2 of "Block Assembly," the light batik $4\frac{1}{2}$ " squares, and the light batik setting triangles as shown.



2. Refer to the assembly diagram below to fill in the open areas with the corresponding rectangle units from step 3 of "Block Assembly."
3. Sew the blocks together in diagonal rows, continuing to press the seam allowances open. Sew the rows together. Press the seam allowances open.



4. Referring to "Butted-Corner Borders" on page 12, add the brown batik $4\frac{1}{2}$ "-wide border strips. Press the seam allowances toward the border strips.
5. Layer the quilt top, batting, and backing; baste the layers together. Quilt as desired.
6. Referring to "Binding" on page 15 and using the multicolored batik $2\frac{1}{2}$ "-wide strips, bind the edges of the quilt.
7. Add a label.

2. Sew two half-square-triangle units from step 1 to opposite sides of a light cream $2\frac{1}{2}$ " square as shown. Press the seam allowances toward the cream square. Make 36.



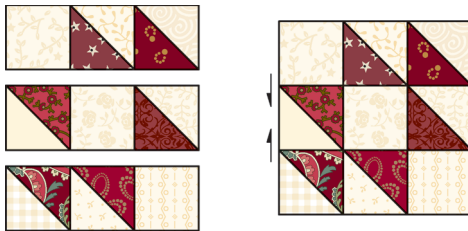
Make 36.

3. Sew together two half-square-triangle units from step 1 and a light cream $2\frac{1}{2}$ " square as shown. Press the seam allowances as shown. Make 72.



Make 72.

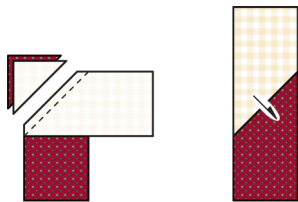
4. Sew together one unit from step 2 and two units from step 3 as shown. Press the seam allowances toward the units from step 2. Make 36 blocks.



Make 36.

SASHING ASSEMBLY

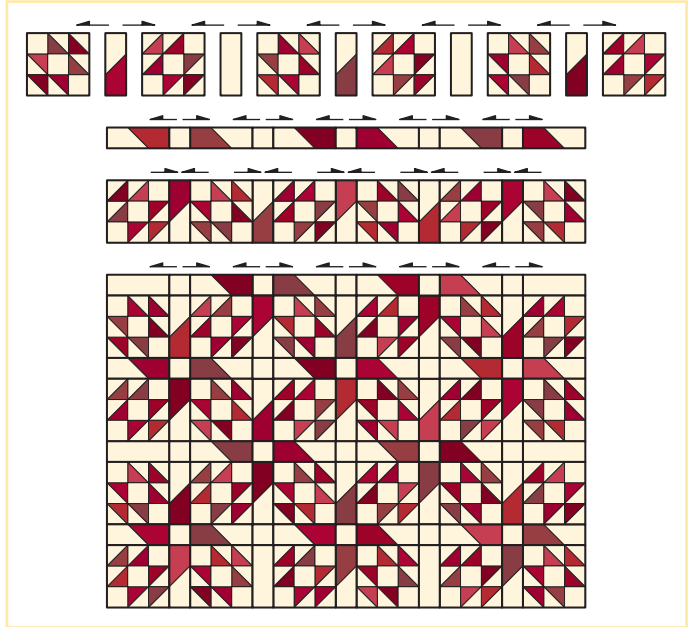
Referring to "Split Units" on page 17, make a split unit using a red $2\frac{1}{2}$ " x $4\frac{1}{2}$ " rectangle and a light cream $2\frac{1}{2}$ " x $4\frac{1}{2}$ " rectangle. Press the seam allowance toward the red fabric. Make 52.



Make 52.

QUILT ASSEMBLY AND FINISHING

1. Arrange the blocks, pieced sashing units, cream $2\frac{1}{2}$ " x $6\frac{1}{2}$ " sashing rectangles, and cream $2\frac{1}{2}$ " sashing posts into horizontal rows as shown. Sew the pieces together in horizontal rows, pressing the seam allowances toward the sashing strips. Sew the rows together. Press the seam allowances in the same direction.



2. Referring to "Butted-Corner Borders" on page 12, add the dark red print $1\frac{1}{2}$ "-wide inner-border strips and the medium red print 6"-wide outer-border strips.
3. Layer the quilt top, batting, and backing; baste the layers together. Quilt as desired.
4. Referring to "Binding" on page 15 and using the red floral $2\frac{1}{2}$ "-wide strips, bind the edges of the quilt.
5. Add a label.